

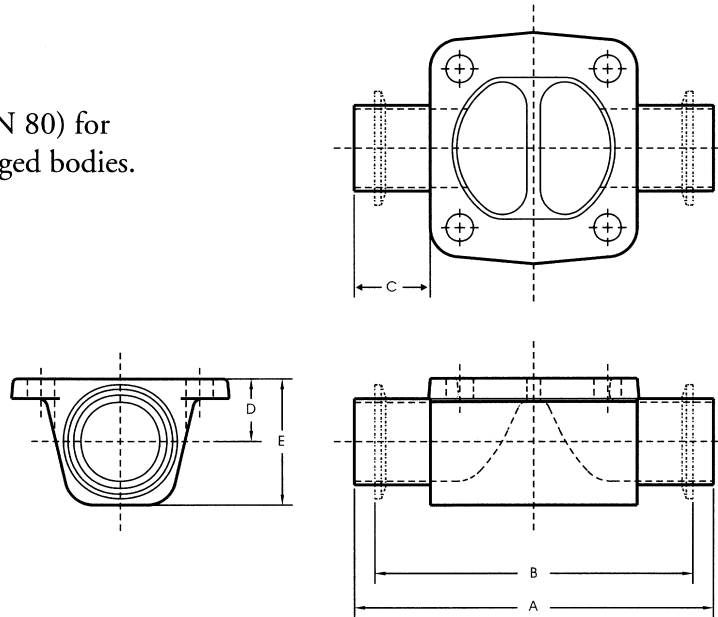
Saunders

STANDARD FORGED VALVE BODIES



Size Range

1/2" (DN15) to 3" (DN 80) for standard two-way Forged bodies.



Body Material

Standard body material for Forged Stainless Steel is to ANSI 316L/DIN 1.4435 specification. Full material traceability to EN 10204/DIN 50049 comes standard on all bodies. Other materials, such as AL6XN, Titanium and Hastelloy-C are also available on special request.

Drainability

The diaphragm valve by design has full drainability when installed with the end ports oriented vertically, or when installed in its horizontal drain angle. The drain angle is marked on each valve with a hash mark on each port. To obtain a drainable installation, position the valve so one of the hash marks points up.

Dimension	Valve Size													
	1/2" DN15		3/4" DN20		1" DN25		1 1/2" DN40		2" DN50		2 1/2" DN65		3" DN80	
	in	mm	in	mm	in	mm	in	mm	in	mm	in	mm	in	mm
A	4.2	107.0	4.6	116.0	5.0	126.0	6.2	158.0	7.4	189.0	8.5	216.0	9.9	253.0
B	3.5	89.0	4.0	101.6	4.5	114.3	5.5	140.0	6.3	159.0	7.6	193.5	8.9	222.0
C	1.2	30.0	1.1	29.0	1.1	28.5	1.3	34.0	1.6	41.0	1.7	42.0	1.9	48.0
D	0.5	13.0	0.6	16.0	0.8	19.5	1.1	28.0	1.3	33.5	1.6	41.5	1.9	49.0
E	1.1	27.0	1.3	32.0	1.5	39.0	2.2	56.0	2.6	67.0	3.3	83.5	3.9	99.0

Saunders



STANDARD FORGED VALVE BODIES

Surface Finish

Forged valve bodies are finished and inspected to ASME BPE surface finish standards. Bodies are available in I.D. finishes of 35Ra, 25Ra, 20Ra, and 11Ra mechanical finishes with electropolishing optional at each level and an O.D. finish, a standard bead blast. Other finishes available upon request.

Diaphragms

Saunders' standard forged valve bodies compliment their unique range of fully traceable FDA/USP Class IV compliant diaphragms.

End Connections

Forged bodies are available in three standard ends: Tri-Clamp, 16 ga. butt-weld, or a Tri-Clamp/butt-weld combination. Available in connection sizes 1/2" (DN15) - 3" (DN80)

Other end connections available upon request. All weld-end valve bodies come standard with a free tangent length suitable for orbital welding.

Operation

Fully compatible with complete range of EC actuators, manual bonnets or Century-series diaphragm actuators.

Cv Valves*

% Open	1/2" DN15	3/4" DN20	1" DN25	1 1/2" DN40	2" DN50	2 1/2" DN65	3" DN80
100	2.6	5.1	12.5	27.7	65.8	82.6	168.7
90	2.6	5.1	12.4	26.9	65.8	80.8	167.7
80	2.6	5.1	12.2	25.6	65.7	79.6	166.7
70	2.6	5.1	12.3	24.1	65.2	76.8	163.0
60	2.6	5.3	10.9	25.7	63.7	74.0	155.2
50	2.5	4.7	8.8	23.0	59.4	80.1	137.4
40	2.3	3.8	6.9	18.9	50.6	70.7	113.9
30	1.9	2.7	4.3	14.2	35.7	53.2	83.1
20	1.2	1.6	2.1	9.3	20.3	32.9	45.7
10	0.2	0.7	0.4	4.0	7.1	12.3	20.5
5	0.1	0.3	0.2	0.7	1.3	4.4	10.6
cm2	0.7	1.96	3.85	9.54	17.76	28.5	41.8

*16 Ga (.065) Weld Ends

Valve Body Weights in pounds*

Size	16 Ga. Butt-weld	Tri-Clamp
1/2" DN15	0.7	0.7
3/4" DN20	1.1	1.2
1" DN25	1.7	2.1
1 1/2" DN40	3.9	3.9
2" DN50	6.0	5.7
2 1/2" DN65	11.3	11.8
3" DN80	18.7	17.3

*weights are approximate

CRANE VALVES
9860 Johnson Road • Montgomery, Texas 77316
936-588-4447 • Fax: 936-588-4427 • www.cranvalve.com

